

Témoignage de musique populaire en Wallonie à la fin du XVIII<sup>ème</sup> siècle.

Retranscription du  
« Manuscrit Wandembrile »  
conservé aux Archives de l'Etat à Namur

# Introduction

Fichier ABC réalisé sur base de photographies du manuscrit "Wandembrile".

Voir ci-après le texte d'A. Rochus :

<http://www.canardfolk.be/index.php?rub=16&sub=205>

## Document originel :

Le manuscrit a été consulté en 2015 aux Archives de l'État à Namur.

Il consiste en un petit carnet recouvert de cuir, dont de nombreuses pages ont été arrachées.

## Auteur :

Il est attribué à Gaspard Joseph Wandembrile, violoneux, né à Jambes le 05/10/1740.

## Epoque :

XVIII<sup>e</sup> siècle (la date de 1778 figure dans le carnet)

## Nature des pièces :

Musiques à danser destinées à être jouées au violon, la plupart en 1<sup>e</sup> position.

Menuets, contredanses, marches, un duo

---

# Inventaire

Le document comporte 113 pièces exploitables et quelques bribes de partitions ou notes sans intérêt (gamme d'ut majeur par exemple), non reprises dans le présent document.

## Inventaire des pièces musicales du manuscrit Wandembrile

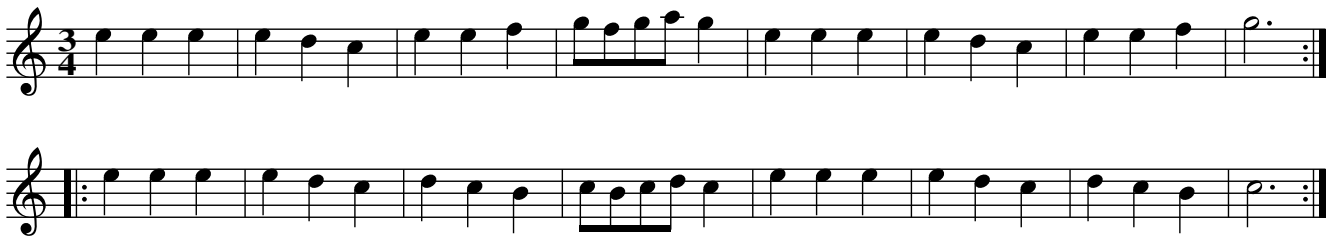
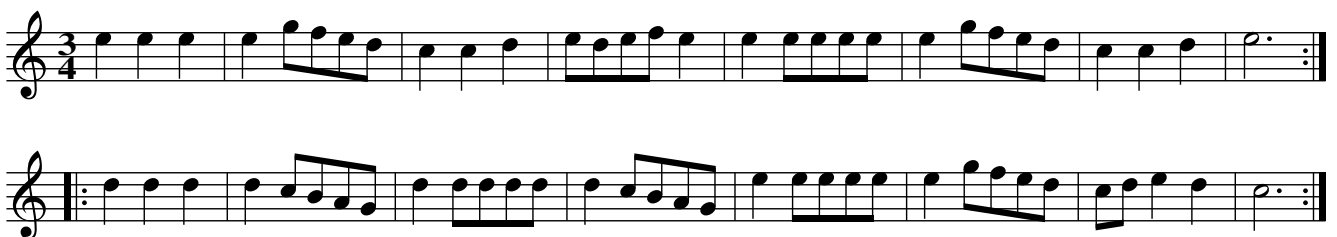
N° OV	Page(s)	Titre WDB	Nature	Mesure	Tonalité	Complet	Structure et durée (mesures)	Commentaire
N°01	1		Exercice	-	Cmaj	oui		Gamme de Cmaj
N°02	1		Exercice	-	Cmaj	oui		Gamme de Cmaj
N°1	2		Menuet	3/4	Cmaj	oui	K8: :8:	
N°2	2-3		Menuet	3/4	Cmaj	oui	K8: :8:	
N°3	3		Menuet	3/4	Cmaj	oui	K8: :8:	
N°4	4		Menuet	3/4	Cmaj	oui	K8: :8:	
N°5	4		Menuet	3/4	Cmaj	oui	K8: :8:	
N°6	5		Menuet	3/4	Gmaj	oui	K8: :8:	
N°7	5		Menuet	3/4	Gmaj	oui	K8: :10:	
N°8	6		Menuet	3/4	Gmaj	oui	K8: :8:	
N°9	6-7		Menuet	3/4	Gmaj/Gmin	oui	K16: :8K16:	
N°10	8		Menuet	3/4	Dmaj	oui	K8: :8:	
N°11	8-9		Menuet	3/4	Dmaj	oui	K8: :8:	
N°12	9		Menuet	3/4	Dmaj	oui	K8: :9: :13:	
N°13	10		Menuet	3/4	Dmaj	oui	K8: :8:	
N°14	10-11		Menuet	3/4	Dmaj	oui	K8: :20:	
N°15	11		Menuet	3/4	Dmaj	oui	K8: :8: :8: :1: :8:	
N°16	12	Marche	Marche	2/2	Dmaj	oui	K6: :12:	
N°17	12-13		Menuet	3/4	Dmaj	oui	K8: :8:	
N°18	13		Marche	2/4	Dmaj	oui	K6: :10:	
N°19	14-15	Marche Du Deserteur	Marche	2/2	Dmaj	oui	K16: :4: :16:	
N°20	15			2/4	Dmaj	oui	K8: :8:	
N°21	16	Marche De Deux Avars	Marche	2/4	Dmaj	oui	K12: :14:	
N°22	17	Marche	Marche	2/2	Dmaj	oui	K9: :9:	
N°23	18	Marche du huron	Marche	2/2	Dmaj	oui	K13: :15:	
N°24	19	La Berlo		2/4	Dmaj	oui	K8: :8:	
N°25	19		Contredanse	6/8	Dmaj	oui	K8: :8:	
N°26	20	Marche	Marche	2/2	Dmaj	oui	K10: :10:	
N°27	21	Marche	Marche	2/2	Dmaj	oui	K8: :8:	
N°28	22			2/4	Dmaj	oui	K8: :8:	
N°29	22-23	Menuet	Menuet	3/4	Amaj	oui	K8: :8:	
N°30	23		Menuet	3/4	Amaj	oui	K8: :8:	
N°31	24			2/4	Dmaj	oui	K8 :24: :1:	
N°32	25			2/4	Amaj	oui	K8: :8: :16: :8:	
N°33	26	Le Carneval anglois	Contredanse	2/4	Gmaj	oui	K8: :16:	
N°34	26-27	La Therese	Contredanse	2/4	Amaj/Amin	oui	K8: :8K8: :8:	
N°35	28-29	Menuet De la Chainé	Menuet	3/4-6/8	Dmin	oui	K8: :16: K8:	
N°36	29	Marche	Marche	2/2	Dmaj	oui	K8: :8:	
N°37	30	Le Carillon D'un Kquerc		2/4	Gmaj	oui	K8: :20:	
N°03	30	Menuet	Menuet	3/4	Dmaj	incomplet	(6 mesures)	Feuille 31-32 arrachée
N°38	33	La Sauterelle		2/4	Dmaj	oui	K8: :8: :8:	
N°39	34	La mit Back		2/4	Dmaj	oui	K8: :8: :8:	
N°40	34-35			2/4 ou 2/2	Dmaj	oui	K18: :26:	

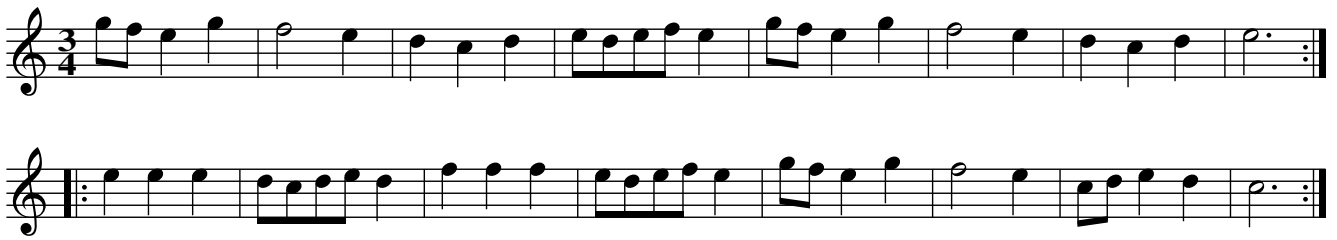
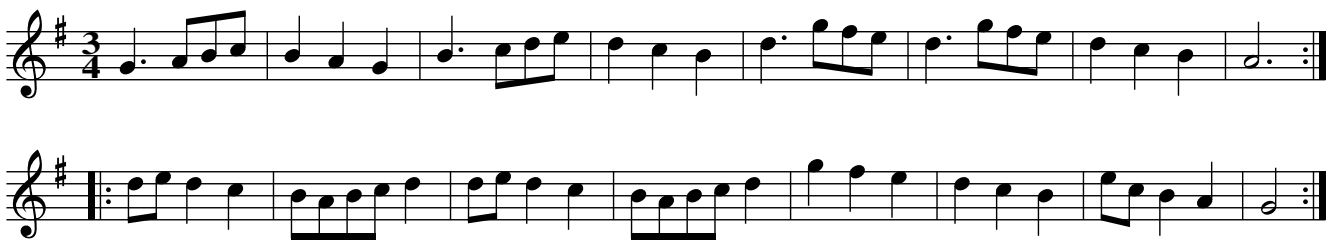
## Inventaire des pièces musicales du manuscrit Wandembriole

N° OV	Page(s)	Titre WDB	Nature	Mesure	Tonalité	Complet	Structure et durée (mesures)	Commentaire
N°41	36	Marche	Marche	6/8	Gmaj	oui	K12: :8:	
N°42	36-37	La Brillante	Contredanse	6/8	Dmaj	oui	K8: :8:	
N°43	37	La Chanoinesse	Contredanse	6/8	Gmaj	oui	K8: :8:	
N°44	38			6/8	Amaj	oui	K8: :8:	
N°45	38-39	Le Cadrille de L'archiduc	Quadrille	2/4	Fmaj	oui	K8: :8: :8: :8:	
N°46	40			2/4	Gmaj	oui	K8: :8: :8: :8:	
N°47	41	L'allemande Suisse	Contredanse	3/4	Dmaj	oui	K8: :16:	
N°48	42	La Parfaite Union		2/2	Dmaj/Dmin	oui	K8: :8: :4: :8: :8:	
N°49	43			2/4	Dmaj	oui	K8: :8:	
N°50	43	Menuet	Menuet	3/4	Dmaj	oui	K8: :8:	
N°51	44	Menuet	Menuet	3/4	Fmaj	oui	K8: :10: :8:	
N°52	45	Matelotte	Matelotte	6/8	Gmin	oui	K8: :8:	
N°53	46	Menuet	Menuet	3/4	Gmaj	oui	K16: :13:	
N°54	47	Colonne		2/4	Dmaj	oui	K8: :8:	
N°55	48-49	allemande	Allemande	2/4	Dmaj	oui	K8: :8: :8: :8: D.C.	
N°56	49			2/4	Cmaj/Cmin	oui	K8: :8: :K8: :8:	
N°57	50	allemande	Allemande	2/4	Cmaj/Fmaj	oui	K8: :8: :K8: :8:	
N°58	51	marche	Marche	2/2	Dmaj	oui	K10: :16:	
N°59	52	marche	Marche	2/2	Dmaj	oui	K12: :14:	
N°60	53	marche	Marche	2/2	Dmaj	oui	K10: :11:	
N°61	54	marche	Marche	C	Dmaj	oui	K11: :16:	
N°62	55	La Rosiere	Contredanse	6/8	Gmaj	oui	K8: :8:	
N°63	56		Menuet	3/4	Fmaj	oui	K16: :14:	
N°64	56		Menuet	3/4	Fmaj	oui	K8: :8:	
N°65	56		Menuet	3/4	Ebmaj	oui	K16: :16:	
N°66	57		Menuet	3/4	Ebmaj	oui	K12: :12: D.C.	
N°67	58	Marche du chevaliers du guet	Marche	2/2	Dmaj	oui	K9: :9:	
N°68	59	Marche de versailles		2/2	Amaj	oui	K8: :10:	
N°69	60	marche des filles de paris		2/2	Dmaj	oui	K9: :4:	
N°70	60	L'amoroso		2/4	Fmaj	oui	K8: :8: :8: :1:	
N°71	61	La julie		2/4	Fmaj	oui	K8: :8: :8: :8:	
N°72	62			2/4	Amaj	oui	K8: :8: :8:	
N°73	62-63	nouvelle Société	Contredanse	2/4	Amaj/Amin	oui	K8: :6: :K8: :8:	
N°74	64-65	Marche		2/2	Dmaj	oui	K15: :16:	
N°04	65			2/4	Gmaj	peut-être	9 mesures	
N°75	66		Exercice	2/2	Gmaj	oui	K13	Exercice
N°76	67		Exercice	2/4	Dmaj	oui	K8: :8:	Exercice en 3è position
N°77	71			2/4	Dmaj	oui	K8: :8:	Feuille 69-70 arrachée. P 68 vierge.
N°78	72-73		Exercice	C	Cmaj	oui	K19	Exercice
N°79	74-77			2/4	Dmaj	oui	K8: :8: :8: :2 + 6:	Les 6 mesures de la p 77 sont probablement la suite de la p 74
N°05	79			3/4	Gmaj	non	Juste 6 mesures	Pp 75-76 arrachée. P 78 vierge
N°80A	98	Violino primo		2/4	Dmaj	oui	K16: :12:	Pages 80-94 vierges. Feuille 95-96 arrachée. P 97 vierge.
N°80B	99	Violino Secundo		2/4	Dmaj	oui	K16: :12:	

## Inventaire des pièces musicales du manuscrit Wandembrile

N° OV	Page(s)	Titre WDB	Nature	Mesure	Tonalité	Complet	Structure et durée (mesures)	Commentaire
N°81	100	Allegro Ma non troppo		2/4	Gmaj	oui	K8: :8:	
N°82	101			2/4	Gmaj	oui	K8: :8:	
N°83	102	Marche	Marche	2/2	Gmaj	oui	K8: :8:	
N°84	103			2/2	Gmaj	oui	K8: :7:	
N°06	104	HOUX		2/4	Gmaj	non	Anachrouse + 1 mesure	
N°85	106	Presto		2/4	Dmaj	oui	K8: :8:	P 105 vierge
N°86	106		Bourrée ?	2/4	Gmaj	oui	K8: :8:	
N°87	107			2/4	Fa# phrygien ?	oui	K8: :8:	
N°88	107			2/4	Gmaj	oui	K8: :8:	
N°89	108	Marche	Marche	2/2	Dmaj	oui	K8: :8:	
N°07	108		Exercice					Gamme de Cmaj
N°90	109			2/2	Dmaj	oui	K8: :8:	
N°91	110	2è		C	Cmaj	oui	K13:	Exercice
N°92	110	lère		C	Cmaj	oui	K17:	Exercice
N°93	110-111			C	Cmaj	oui	K14:	
N°94	111			C	Cmaj	oui	K10:	
N°95	111			C	Cmaj	oui	K10:	
N°96	112			C	Cmaj	oui	K10:	
N°97	112			C	Cmaj	oui	K9:	
N°98	112-113			C	Cmaj	oui	K6:	
N°99	113			C	Cmaj	oui	K7:	
N°100	113			C	Cmaj	oui	K8:	
N°101	114			C	Cmaj	oui	K7:	
N°102	114			C	Cmaj	oui	K6:	
N°103	114-115			C	Cmaj	oui	K6:	
N°104	115			C	Cmaj	oui	K6:	
N°105	115			C	Cmaj	oui	K8:	
N°106	116			C	Cmaj	oui	K9:	
N°107	116			C	Cmaj	oui	K12:	
N°108	117			C	Cmaj	oui	K8:	
N°109	117			C	Cmaj	oui	K13:	
N°110	118			C	Cmaj	oui	K10	
N°08	118			3/4	Emaj ?	non	Juste 3 mesures	
N°111	118			2/4	Dmaj	oui	K5: :6:	
N°09	119			2/2	Gmaj	non	Juste 3 mesures	
N°112	132		Menuet	3/4	Gmaj	oui	K8: :10:	Pages 110-131 vierges
N°113	132	Andante	Branle	2/4	Gmaj	oui	K8: :8: D.C.	Une dizaine de pages arrachées après la p 132

**N° 1 (Menuet)****N° 2 (Menuet)****N° 3 (Menuet)****N° 4 (Menuet)**


**N° 5 (Menuet)****N° 6 (Menuet)****N° 7 (Menuet)****N° 8 (Menuet)**

**N° 9 (Menuet)**

Musical score for Minuet No. 9, consisting of five staves. The first four staves are in treble clef with a key signature of one sharp (F#) and a 3/4 time signature. The fifth staff is in bass clef with a key signature of one flat (Bb) and a 3/4 time signature. The piece features a mix of eighth and sixteenth notes, with some triplet markings.

**N° 10 (Menuet)**

Musical score for Minuet No. 10, consisting of two staves in treble clef with a key signature of one sharp (F#) and a 3/4 time signature. The piece is characterized by a prominent triplet of eighth notes in the first staff.

**N° 11 (Menuet)**

Musical score for Minuet No. 11, consisting of two staves in treble clef with a key signature of one sharp (F#) and a 3/4 time signature. The piece features a sequence of eighth notes in the first staff and a triplet of eighth notes in the second staff.



## N° 12 (Menuet)

Musical score for Minuet No. 12, 3/4 time, G major. The score consists of four staves. The first staff begins with a treble clef, a key signature of one sharp (F#), and a 3/4 time signature. It features a series of eighth and sixteenth notes, with a repeat sign and a double bar line at the end. The second staff continues the melody with similar rhythmic patterns. The third staff shows a change in the melodic line, still maintaining the 3/4 time. The fourth staff concludes the piece with a final cadence and a repeat sign.

## N° 13 (Menuet)

Musical score for Minuet No. 13, 3/4 time, G major. The score consists of two staves. The first staff starts with a treble clef, a key signature of one sharp (F#), and a 3/4 time signature. It contains a sequence of eighth and sixteenth notes. The second staff continues the melody, featuring a triplet of eighth notes and ending with a repeat sign and a double bar line.

## N° 14 (Menuet)

Musical score for Minuet No. 14, 3/4 time, G major. The score consists of four staves. The first staff begins with a treble clef, a key signature of one sharp (F#), and a 3/4 time signature. It features a triplet of eighth notes and a series of eighth and sixteenth notes. The second staff continues the melody with a triplet of eighth notes. The third staff shows a change in the melodic line, still maintaining the 3/4 time. The fourth staff concludes the piece with a final cadence and a repeat sign.

**N° 15 (Menuet)**

Musical score for N° 15 (Menuet), consisting of four staves of music in G major and 3/4 time. The first staff begins with a treble clef, a key signature of one sharp (F#), and a 3/4 time signature. The melody is composed of eighth and quarter notes. The second staff starts with a repeat sign and contains a sequence of eighth and quarter notes. The third staff also begins with a repeat sign and features a series of eighth notes followed by quarter notes. The fourth staff starts with a repeat sign and continues the melodic line with eighth and quarter notes, ending with a double bar line and repeat dots.

**N° 16 "Marche"**

Musical score for N° 16 "Marche", consisting of three staves of music in G major and 2/4 time. The first staff begins with a treble clef, a key signature of one sharp (F#), and a 2/4 time signature. The melody is composed of quarter and eighth notes. The second staff continues the melody with quarter and eighth notes. The third staff also continues the melody with quarter and eighth notes, ending with a double bar line and repeat dots.

**N° 17 (Menuet)**

Musical score for N° 17 (Menuet), consisting of two staves of music in G major and 3/4 time. The first staff begins with a treble clef, a key signature of one sharp (F#), and a 3/4 time signature. The melody is composed of eighth and quarter notes. The second staff starts with a repeat sign and continues the melodic line with eighth and quarter notes, ending with a double bar line and repeat dots.

## N° 18 (Marche)

Musical score for N° 18 (Marche), consisting of three staves of music in 2/4 time, key of D major. The first staff begins with a treble clef and a key signature of one sharp (F#). The music features a steady march rhythm with eighth and sixteenth notes. The second staff includes a repeat sign at the beginning. The third staff concludes with a double bar line and repeat dots.

## N° 19 "Marche Du Deserteur"

Musical score for N° 19 "Marche Du Deserteur", consisting of seven staves of music in 2/4 time, key of D major. The first staff begins with a treble clef and a key signature of one sharp (F#), and includes a dynamic marking of *p* (piano). The second staff includes a dynamic marking of *f* (forte). The music features a steady march rhythm with eighth and sixteenth notes. The score includes repeat signs and concludes with a double bar line and repeat dots.

**N° 20 (Marche)****N° 21 "Marche De Deux Avars"**
**N° 22 "Marche"**

Le texte qui suit figure à côté du titre :

"Priez le Baron de vous amener a ma chambre parce que je veux lui demander un plaisir"

## N° 23 "Marche du Huron"

Musical score for N° 23 "Marche du Huron". The score consists of four staves of music in G major (one sharp) and 2/4 time. The melody is characterized by a steady eighth-note rhythm with occasional quarter notes and rests. The piece concludes with a double bar line and repeat dots.

## N° 24 "La Berlo"

Musical score for N° 24 "La Berlo". The score consists of two staves of music in G major (one sharp) and 2/4 time. The melody features a mix of eighth and sixteenth notes, with some slurs. The piece ends with a double bar line and repeat dots.

## N° 25 (Contredanse)

Musical score for N° 25 (Contredanse). The score consists of two staves of music in G major (one sharp) and 6/8 time. The melody is highly rhythmic, featuring many sixteenth notes and eighth notes. The piece concludes with a double bar line and repeat dots.

**N° 26 "Marche"**

Musical score for N° 26 "Marche". The score is written in treble clef with a key signature of one sharp (F#) and a common time signature (C). It consists of four staves of music. The first staff begins with a treble clef, a sharp sign, and a common time signature. The music features a series of eighth and sixteenth notes, with some rests. The second staff continues the melody and includes some chordal accompaniment at the end. The third staff starts with a repeat sign and continues the melody. The fourth staff concludes the piece with a final cadence.

**N° 27 "Marche"**

Musical score for N° 27 "Marche". The score is written in treble clef with a key signature of one sharp (F#) and a common time signature (C). It consists of four staves of music. The first staff begins with a treble clef, a sharp sign, and a common time signature. The music features a series of eighth and sixteenth notes, with some rests. The second staff continues the melody and includes some chordal accompaniment at the end, with a triplet of eighth notes marked with a '3'. The third staff starts with a repeat sign and continues the melody, also featuring a triplet of eighth notes marked with a '3'. The fourth staff concludes the piece with a final cadence.

**N° 28**

Musical score for N° 28, a 2/4 piece in D major. The score consists of four staves of music. The first two staves are the main melody, and the last two staves are a variation or continuation. The piece features a mix of eighth and sixteenth notes, with some rests and a final double bar line.

**N° 29 "Menuet"**

Musical score for N° 29, a 3/4 minuet in D major. The score consists of two staves of music. The first staff is the main melody, and the second staff is a variation or continuation. The piece features a mix of quarter and eighth notes, with a triplet of eighth notes in the final measure of the second staff.

**N° 30 (Menuet)**

Musical score for N° 30, a 3/4 minuet in D major. The score consists of two staves of music. The first staff is the main melody, and the second staff is a variation or continuation. The piece features a mix of quarter and eighth notes, with two triplet markings (3) over eighth notes in the second staff.

**N° 31**

Musical score for N° 31, Wandembrile, 1778. The score consists of five staves of music in G major (one sharp) and 2/4 time. The first staff begins with a treble clef and a key signature of one sharp. The music features a mix of eighth and sixteenth notes, with some rests and a final double bar line. The second staff starts with a repeat sign and includes a fermata over the final note. The third and fourth staves continue the melodic line with various rhythmic patterns. The fifth staff concludes with a double bar line and repeat dots.

**N° 32**

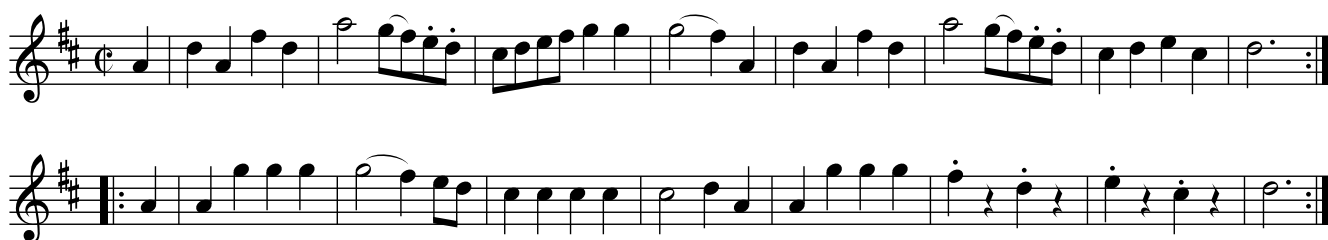
Musical score for N° 32, Wandembrile, 1778. The score consists of five staves of music in G major (one sharp) and 2/4 time. The first staff begins with a treble clef and a key signature of one sharp. The music features a mix of eighth and sixteenth notes, with some rests and a final double bar line. The second staff starts with a repeat sign and includes a fermata over the final note. The third and fourth staves continue the melodic line with various rhythmic patterns. The fifth staff concludes with a double bar line and repeat dots.



### N° 33 "Le Carneval anglais" (Contredanse)

### N° 34 "La Therese" (Contredanse)

### N° 35 "Menuet De la Chaine"

**N° 36 "Marche"****N° 37 "Le Carillon D'un Kquerc"****N° 38 "La Sauterelle"**

## N° 39 "La Mit Back"

Three staves of musical notation for N° 39 "La Mit Back". The music is in G major (one sharp) and 2/4 time. The first staff contains 8 measures, the second 8 measures, and the third 8 measures, all ending with a double bar line and repeat dots.

## N° 40

Six staves of musical notation for N° 40. The music is in G major (one sharp) and 2/4 time. The first staff contains 8 measures, the second 8 measures, the third 8 measures, the fourth 8 measures, the fifth 8 measures, and the sixth 8 measures, all ending with a double bar line and repeat dots.

Il y a une incohérence dans le nombre de temps aux mesures 21 et 25 (interprétation personnelle).  
 Les doubles notes dans les mesures 17,18,20,21,24,25,31,44,45,46  
 doivent probablement être jouées par 2 instruments différents (2 voix).

**N° 41 "Marche"**

Musical score for N° 41 "Marche". The score consists of three staves of music in treble clef, 6/8 time signature, and one sharp (F#) in the key signature. The first staff contains the main melody. The second staff provides a harmonic accompaniment. The third staff features a rhythmic pattern of eighth notes, likely for a keyboard or lute accompaniment.

**N° 42 "La Brillante" (Contredanse)**

Musical score for N° 42 "La Brillante" (Contredanse). The score consists of two staves of music in treble clef, 6/8 time signature, and one sharp (F#) in the key signature. The first staff contains the main melody. The second staff provides a harmonic accompaniment.

**N° 43 "La Chanoinesse" (Contredanse)**

Musical score for N° 43 "La Chanoinesse" (Contredanse). The score consists of two staves of music in treble clef, 6/8 time signature, and one sharp (F#) in the key signature. The first staff contains the main melody. The second staff provides a harmonic accompaniment.

**N° 44**

Musical score for N° 44. The score consists of two staves of music in treble clef, 6/8 time signature, and two sharps (F# and C#) in the key signature. The first staff contains the main melody. The second staff provides a harmonic accompaniment.

**N° 45 "Le Cadrille de L'archiduc"**

Musical score for N° 45, "Le Cadrille de L'archiduc". The score is written in 2/4 time and B-flat major. It consists of five staves of music. The first staff begins with a treble clef, a key signature of one flat, and a 2/4 time signature. The music features a mix of eighth and sixteenth notes, with some slurs and ties. The second staff starts with a repeat sign. The third and fourth staves contain more complex rhythmic patterns with slurs and ties. The fifth staff concludes with a repeat sign.

**N° 46**

Musical score for N° 46. The score is written in 2/4 time and D major. It consists of four staves of music. The first staff begins with a treble clef, a key signature of two sharps, and a 2/4 time signature. The music is primarily composed of eighth and sixteenth notes, with some slurs and ties. The second staff starts with a repeat sign. The third and fourth staves continue the melodic line with various rhythmic patterns and slurs. The fourth staff concludes with a repeat sign.

## N° 47 "L'allemande Suisse" (Contredanse)

Musical score for N° 47 "L'allemande Suisse" (Contredanse). The score is written in three staves, all in treble clef. The first staff is in 3/4 time and D major. The second staff is in 3/4 time and D major with a key signature change to two sharps (F# and C#). The third staff is in 3/4 time and D major.

## N° 48 "La Parfaite Union"

Musical score for N° 48 "La Parfaite Union". The score is written in five staves, all in treble clef. The first two staves are in 2/4 time and D major. The third staff is in 2/4 time and D minor. The fourth and fifth staves are in 2/4 time and D minor.

## N° 49

Musical score for N° 49. The score is written in two staves, both in treble clef. Both staves are in 2/4 time and D major.

## N° 50 "Menuet"

## N° 51 "Menuet"

## N° 52 "Matelotte"

**N° 53 "Menuet"**

Musical score for N° 53 "Menuet". The piece is in 3/8 time and B-flat major. It consists of four staves of music. The first two staves are the main melody, and the last two staves are the accompaniment. The score includes various musical notations such as notes, rests, and bar lines.

**N° 54 "Colonne"**

Musical score for N° 54 "Colonne". The piece is in 2/4 time and D major. It consists of two staves of music. The first staff is the main melody, and the second staff is the accompaniment. The score includes various musical notations such as notes, rests, and bar lines.



## N° 55 "allemande"

Musical score for N° 55 "allemande". The score is written in treble clef, 2/4 time, and D major. It consists of seven staves of music. The first staff begins with a treble clef, a key signature of one sharp (F#), and a 2/4 time signature. The music features a series of eighth and sixteenth notes, often beamed together. The second staff continues the melody. The third staff includes a repeat sign. The fourth staff ends with the word "FINE". The fifth staff begins with a repeat sign. The sixth staff includes a repeat sign and a melodic flourish. The seventh staff includes the lyrics "fa mi re mi" and ends with "D.C." (Da Capo).

## N° 56

Musical score for N° 56. The score is written in treble clef, 2/4 time, and D major. It consists of four staves of music. The first staff begins with a treble clef, a key signature of one sharp (F#), and a 2/4 time signature. The music features a series of eighth and sixteenth notes, often beamed together. The second staff continues the melody. The third staff includes a repeat sign and a key signature change to B minor (two flats). The fourth staff includes a repeat sign and a key signature change to B minor (two flats).

**N° 57 "allemande"**

Musical score for N° 57 "allemande". The score consists of eight staves. The first two staves are in treble clef with a 2/4 time signature. The third staff contains chords. The fourth staff is in treble clef. The fifth and sixth staves are in bass clef. The seventh and eighth staves are in bass clef. The score includes various musical notations such as notes, rests, and repeat signs. A label "(illisible)" is present above the seventh staff.

**N° 58 "marche"**

Musical score for N° 58 "marche". The score consists of four staves, all in treble clef. The key signature has two sharps (F# and C#). The time signature is common time (C). The score includes various musical notations such as notes, rests, and repeat signs.

## N° 59 "marche"

Musical score for N° 59 "marche". The score is written in treble clef with a key signature of one sharp (F#) and a common time signature (C). It consists of four staves of music. The first staff begins with a triplet of eighth notes. The second staff features a triplet of eighth notes in the middle. The third staff has a triplet of eighth notes towards the end. The fourth staff concludes with a triplet of eighth notes. The melody is characterized by rhythmic patterns and a final note with a mordent-like ornamentation.

L'ornementation (mordant ?) sur le mi dans l'avant-avant-avant-dernière mesure est incertaine.

## N° 60 "Marche"

Musical score for N° 60 "Marche". The score is written in treble clef with a key signature of one sharp (F#) and a common time signature (C). It consists of four staves of music. The first staff features a triplet of eighth notes. The second staff contains multiple triplet markings. The third staff also includes several triplet markings. The fourth staff concludes with a triplet of eighth notes. The melody is characterized by rhythmic patterns and triplet markings throughout.

## N° 61 "Marche"

Musical score for N° 61 "Marche". The piece is in G major (one sharp) and common time (C). It consists of four staves of music. The first staff begins with a triplet of eighth notes (G4, A4, B4) and ends with another triplet of eighth notes (G4, A4, B4). The second staff continues the melody with various rhythmic patterns. The third staff features a more complex melodic line with some rests. The fourth staff concludes the piece with a series of eighth notes and a final triplet of eighth notes.

## N° 62 "La Rosiere" (Contredanse)

Musical score for N° 62 "La Rosiere" (Contredanse). The piece is in G major (one sharp) and 6/8 time. It consists of two staves of music. The first staff begins with a series of eighth notes and ends with a double bar line and repeat sign. The second staff continues the melody with a similar rhythmic pattern, also ending with a double bar line and repeat sign.

## N° 63 (Menuet)

Musical score for N° 63 (Menuet). The piece is in F major (one flat) and 3/4 time. It consists of four staves of music. The first staff begins with a series of eighth notes. The second staff features a triplet of eighth notes (G4, A4, B4) and ends with a double bar line and repeat sign. The third staff continues the melody with a triplet of eighth notes (G4, A4, B4) and ends with a double bar line and repeat sign. The fourth staff concludes the piece with a triplet of eighth notes (G4, A4, B4) and ends with a double bar line and repeat sign.

### N° 64 (Menuet)

Musical score for Minuet No. 64, 3/4 time, B-flat major. The score consists of two staves. The first staff contains the first six measures. The second staff contains the remaining six measures, including a triplet of eighth notes in the final measure.

### N° 65 (Menuet)

Musical score for Minuet No. 65, 3/4 time, B-flat major. The score consists of four staves. The first staff contains the first six measures. The second staff contains the next six measures, including a triplet of eighth notes. The third staff contains the next six measures. The fourth staff contains the final six measures, including two triplet markings.

### N° 66 (Menuet)

Musical score for Minuet No. 66, 3/4 time, B-flat major. The score consists of four staves. The first staff contains the first six measures. The second staff contains the next six measures, including a triplet of eighth notes. The third staff contains the next six measures. The fourth staff contains the final six measures, including a triplet of eighth notes and the instruction "D.C." at the end.

### N° 67 "Marche du chevaliers du guet"

Musical score for N° 67 "Marche du chevaliers du guet". The score is written in treble clef with a key signature of two sharps (F# and C#) and a common time signature (C). It consists of four staves of music. The first staff begins with a quarter note G4, followed by eighth notes. The second staff continues the melody with eighth notes and a final half note. The third staff features a repeat sign, followed by eighth notes and three triplet markings (indicated by a '3' below the notes and a '+' above). The fourth staff concludes the piece with eighth notes and a final half note.

### N° 68 "Marche de versailles"

Musical score for N° 68 "Marche de versailles". The score is written in treble clef with a key signature of two sharps (F# and C#) and a common time signature (C). It consists of three staves of music. The first staff begins with a quarter note C4, followed by eighth notes and a final half note. The second staff continues the melody with eighth notes and a final half note. The third staff features a repeat sign, followed by eighth notes and a triplet marking (indicated by a '3' below the notes and a '+' above).

### N° 69 "marche des filles de paris"

Musical score for N° 69 "marche des filles de paris". The score is written in treble clef with a key signature of two sharps (F# and C#) and a common time signature (C). It consists of three staves of music. The first staff begins with a quarter note G4, followed by eighth notes and a final half note. The second staff continues the melody with eighth notes and a final half note. The third staff features a repeat sign, followed by eighth notes and a final half note.

**N°70 "L'amososo"**

Musical score for N°70 "L'amososo". The piece is in 2/4 time and B-flat major. It consists of three staves of music. The first staff begins with a treble clef, a B-flat key signature, and a 2/4 time signature. The melody is composed of eighth and sixteenth notes. The second staff continues the melody with similar rhythmic patterns. The third staff concludes the piece with a double bar line and repeat dots.

**N°71 "La julie"**

Musical score for N°71 "La julie". The piece is in 2/4 time and B-flat major. It consists of six staves of music. The first staff begins with a treble clef, a B-flat key signature, and a 2/4 time signature. The melody features eighth and sixteenth notes, with some notes marked with a '+' sign. The second staff continues the melody with similar rhythmic patterns. The third and fourth staves feature a more complex rhythmic pattern with many sixteenth notes. The fifth and sixth staves conclude the piece with a double bar line and repeat dots.

**N°72**

Musical score for N°72, Wandembrile, in G major and 2/4 time. The score consists of three staves of music. The first staff has three measures with '+' signs above the second, fourth, and sixth notes. The second and third staves each have two measures with '+' signs above the second and fourth notes. The piece ends with a double bar line and repeat dots.

**N°73 "nouvelle Société" (Contredanse)**

Musical score for N°73, "nouvelle Société" (Contredanse), in G major and 2/4 time. The score consists of four staves of music. The first staff has four measures. The second staff has four measures with a '+' sign above the eighth note. The third and fourth staves each have four measures. The piece ends with a double bar line and repeat dots.



## N°74 "Marche"

Musical score for N°74 "Marche". The score consists of six staves of music in treble clef, key signature of one sharp (F#), and common time (C). The first staff begins with a triplet of eighth notes. The second staff contains two more triplet markings. The piece concludes with a double bar line and repeat dots.

## N°75

Musical score for N°75. The score consists of two staves of music in treble clef, key signature of one sharp (F#), and common time (C). The melody is simple and ends with a double bar line and repeat dots.

## N°76

Musical score for N°76. The score consists of two staves of music in treble clef, key signature of one sharp (F#), and 3/4 time. Fingerings are indicated by numbers 1-4 above the notes. The first staff has fingerings: 1 1 1 1 1 1 2 3 4 1. The second staff has fingerings: 1 1 1 1 1 1 4 3 2 1. The piece concludes with a double bar line and repeat dots.

## N°77

Musical score for N°77, consisting of two staves in 2/4 time with a key signature of one sharp (F#). The first staff begins with a treble clef, a sharp sign, and a 2/4 time signature. The melody features a series of eighth-note runs and quarter notes, with two trills marked with a '+' sign. The second staff continues the melody with similar patterns and concludes with a repeat sign.

## N°78

Musical score for N°78, consisting of nine staves in common time (C). The first staff begins with a treble clef and a common time signature. The melody is primarily composed of half notes and quarter notes. The fifth and eighth staves feature complex rhythmic patterns with triplets marked with a '3'. The piece concludes with a final cadence on the ninth staff.

## N°79

The musical score for N°79, "Wandembrile", is written in G major (one sharp) and 2/4 time. It consists of five staves of music. The first four staves contain the main melody, which begins with a quarter rest followed by a series of eighth and sixteenth notes. The fifth staff contains a separate section of six measures, which appears to be a continuation or a variation of the main melody, ending with a plus sign (+) above the final note.

Les 6 dernières mesures pourraient ne pas faire partie du même morceau;  
une feuille arrachée les sépare du reste.

L'ensemble donne cependant une impression de cohérence.

La feuille a probablement été arrachée avant d'écrire la fin de la pièce.

## N° 80

Violino primo

Violino Secundo

*p* *f*

*p* *f*

*p* *f*

*f*

## N° 81 "Allegro Ma non troppo"

Allegro ma non troppo

## N° 82

## N° 83 "Marche"

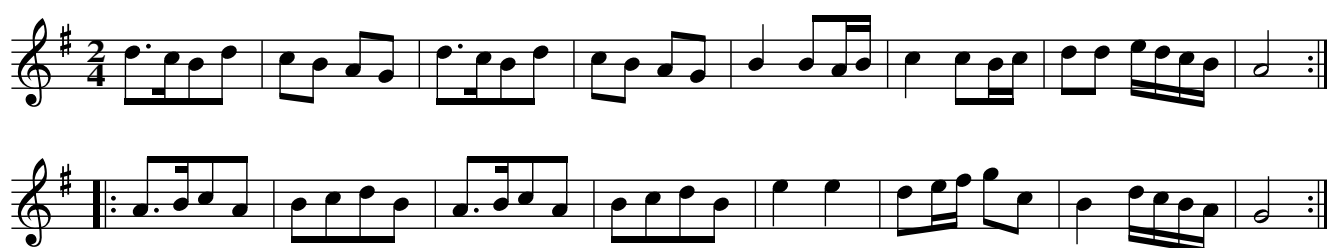
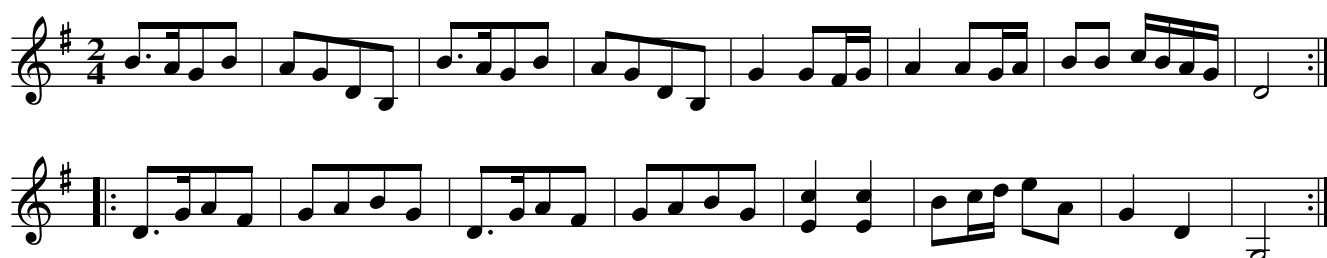
Musical score for N° 83 "Marche". The piece is in G major (one sharp) and 2/4 time. It consists of four staves of music. The first staff begins with a treble clef and a key signature of one sharp. The melody features several triplet markings (indicated by a '3' above the notes). The second and third staves continue the melody with more triplet markings. The fourth staff concludes the piece with a double bar line and repeat dots.

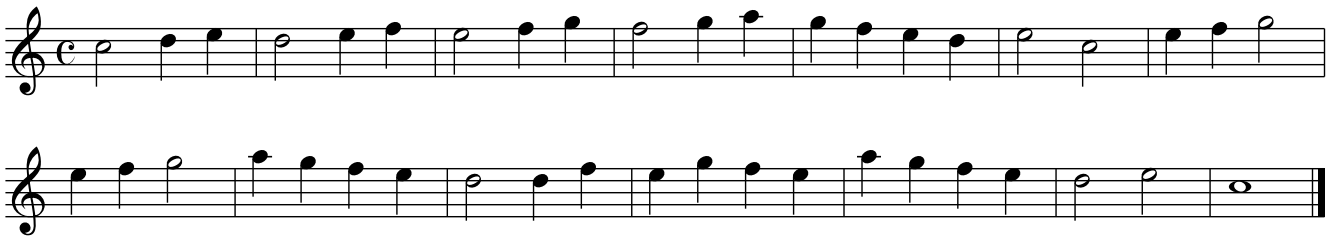
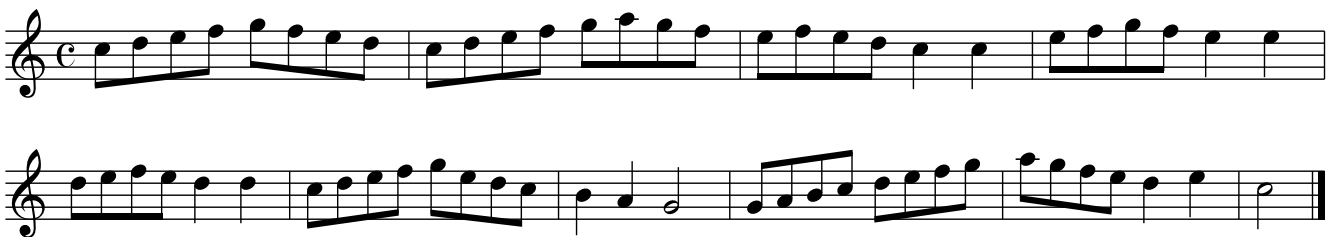
## N° 84

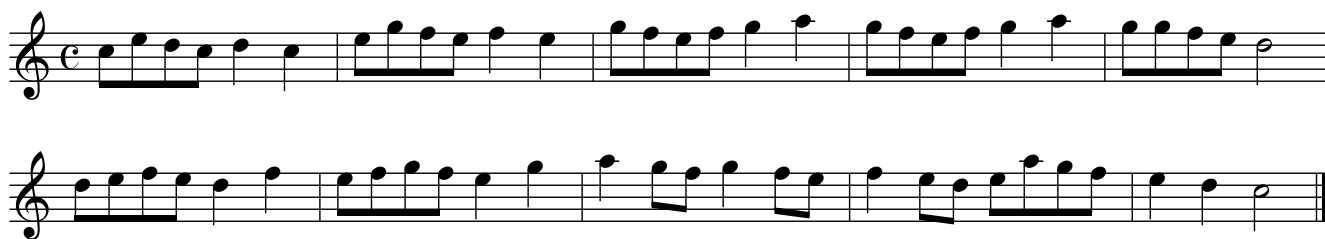
Musical score for N° 84. The piece is in G major (one sharp) and 2/4 time. It consists of four staves of music. The first staff begins with a treble clef and a key signature of one sharp. The melody features several triplet markings (indicated by a '3' above the notes). The second and third staves continue the melody with more triplet markings. The fourth staff concludes the piece with a double bar line and repeat dots.

## N° 85 "Presto"

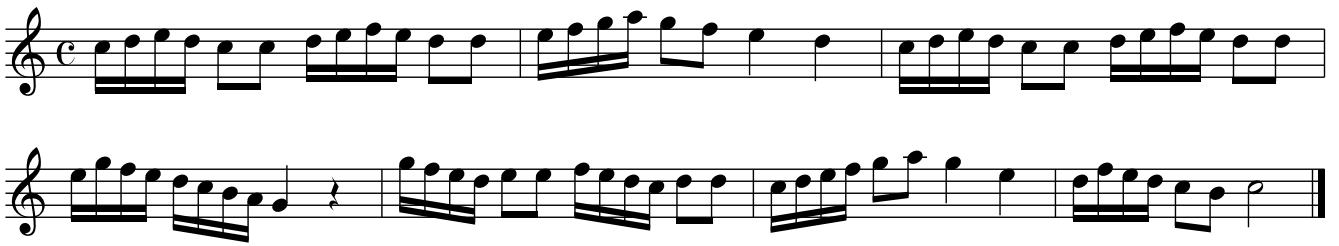
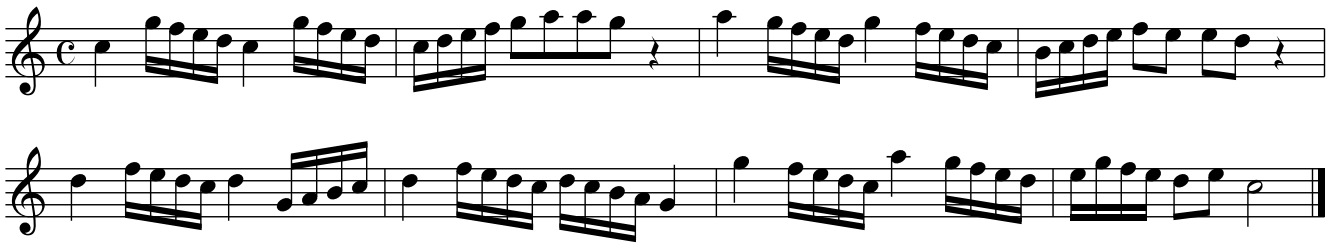
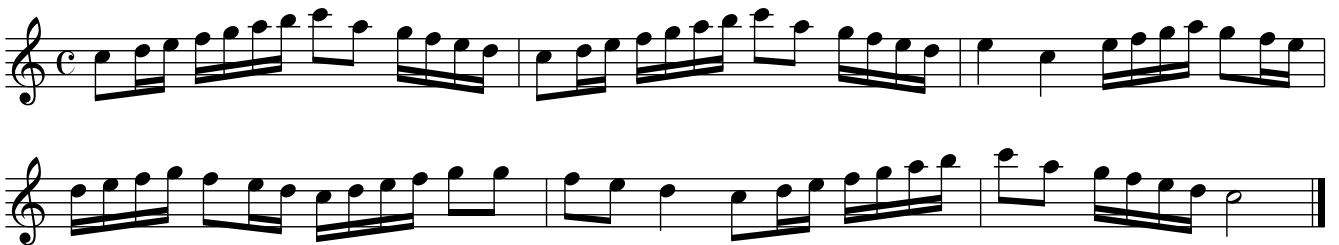
Musical score for N° 85 "Presto". The piece is in G major (one sharp) and 2/4 time. It consists of two staves of music. The first staff begins with a treble clef, a key signature of one sharp, and a 2/4 time signature. The tempo marking "Presto" is written above the first staff. The melody is characterized by rapid sixteenth-note passages. The second staff concludes the piece with a double bar line and repeat dots.

**N° 86****N° 87****N° 88****N° 89 "Marche"**

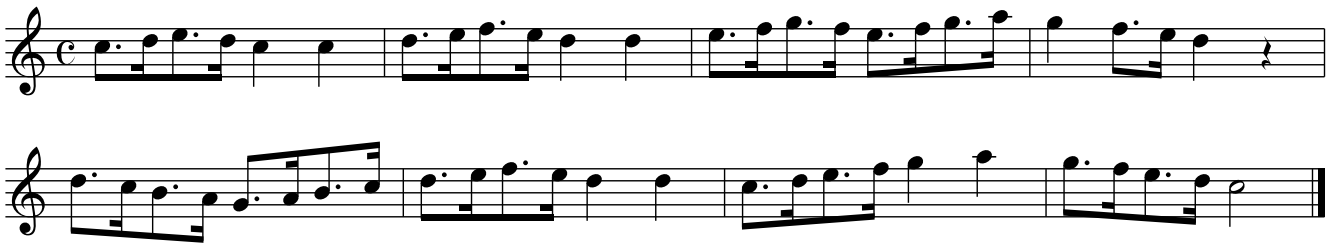
**N° 90****N° 91 "2e"****N° 92 "Iere"****N° 93****N° 94**

**N° 95****N° 96****N° 97****N° 98**



**N° 99****N° 100****N° 101****N° 102**

**N° 103****N° 104****N° 105****N° 106**

**N° 107****N° 108****N° 109**

Il manque 2 temps dans la mesure 9.

**N° 110**

**N° 111**

Très raturé, semble être un brouillon.

**N° 112 (Menuet)**

Toute la partition est difficilement lisible et d'une écriture irrégulière.

**N° 113 "Andante" (Branle)**